



Shilbottle Primary Newsletter

Week 20 – 15 February 2019



Have a great holiday – have fun, enjoy time with friends and family, stay safe, keep reading, catch up with homework and have a go with Rock Stars times tables [password is the same as Mathletics] ☺



Are you having a clear out of construction toys, dolls, jigsaws, books or dressy up costumes during the holiday? School would be interested in giving them a new home ...

STAR OF THE WEEK

RECEPTION: Archie S

YEAR 1: Jasmine H

YEAR 2: Maisie C

YEAR 3: Sophie M

YEAR 4: Connor W

YEAR 5: Owen R

YEAR 6: Callum L & Luke C



PRESENTATION AWARD

RECEPTION: Henry E

YEAR 1: Paige T

YEAR 2: Ethan C

YEAR 3: Liam S

YEAR 4: Lily P

YEAR 5: Skye G

YEAR 6: Millie R



After School

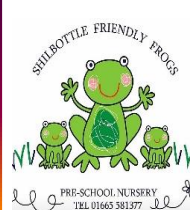
March 2019

Monday	Karate Ensemble	R – Y6 Y3 – Y6
Tuesday	Football Coding	R – Y5 R – Y5
Wednesday	Lego	R – Y6
Thursday	Football	Y4 – Y6
Friday	Quicksticks	Y3 – Y6

These clubs finish at 4:15. For sporty clubs please bring in clothes from home ☺

Friendly Frogs Pre School Nursery

Do you have a child or know someone who does [aged 2 – 4 years] who is ready for Pre-School Nursery? A small number of spaces are available so ... call in and have a look!



Children younger than 2?

Have you put their Name on the Friendly Frogs waiting list to secure their place?

HEAD TEACHER AWARD



KS1 – Kayla M

KS2 – Alfie B



ATTENDANCE WINNERS THIS WEEK

Y4 Class

WORLD BOOK DAY – 7 MARCH

Children are able to come to school dressed as a character from a book, this is optional but school uniform should be worn if they don't feel they want to get dressed up.

Remember ... Keep checking our School Website Facebook & Facebook Pages ☺

www.shilbottle.northumberland.sch.uk



Fun, Respect & Friendship – Every child matters to us

Shilbottle Primary Newsletter



**National
Online
Safety**

7 questions to help you start a conversation with your child about online safety

#WakeUpWednesday

1



Which apps/games are you using at the moment?

THIS WILL GIVE YOU A GOOD OVERVIEW OF THE TYPES OF THINGS YOUR CHILDREN ARE DOING ON THEIR DEVICES, ALONG WITH THEIR INTERESTS. REMEMBER THAT THEY MIGHT NOT TELL YOU EVERYTHING THEY ARE USING, SO IT IS A GOOD IDEA TO ASK THEM TO SHOW YOU THEIR DEVICE, BECAUSE NEW APPS AND GAMES ARE RELEASED REGULARLY, IT IS IMPORTANT TO HAVE THIS CONVERSATION OFTEN TO ENSURE YOU ARE UP TO DATE WITH WHAT THEY ARE DOING.



Which websites do you enjoy using and why?

AS IN THE TIP ABOVE, ASKING THIS QUESTION WILL ALLOW YOU TO FIND OUT WHAT YOUR CHILD IS DOING ONLINE, AND ENCOURAGE POSITIVE CONVERSATIONS ABOUT THEIR ONLINE ACTIVITY. ASK THEM HOW THEY USE THE WEBSITES, AND TAKE AN INTEREST IN HOW THEY CAN USE THEM IN A POSITIVE WAY, ALSO ASKING THEM TO SHOW YOU IF POSSIBLE.



2

3



How does this game/app work?
Can I play?

SHOW A GENUINE INTEREST IN WHAT THEY ARE DOING, WHILST YOU ARE PLAYING A GAME OR USING AN APP WITH THEM, IT MIGHT HIGHLIGHT SOMETHING THAT THEY DON'T NECESSARILY THINK IS A DANGER TO THEM. IF THEY ACT LIKE THEY DON'T WANT TO SHARE THEIR ACTIVITIES WITH YOU, QUESTION WHY.

Do you have any online friends?

CHILDREN CAN FORM POSITIVE RELATIONSHIPS WITH PEOPLE ONLINE, AND THIS HAS BECOME MORE COMMON THANKS TO ONLINE MULTI-PLAYER OPTIONS, BUT THEY MAY NOT FULLY UNDERSTAND THE DIFFERENCE BETWEEN A FRIEND AND A STRANGER. YOU COULD MAKE THE QUESTION MORE SPECIFIC TO YOUR CHILD. FOR EXAMPLE: "HAVE YOU MET ANYONE ONLINE THAT YOU LIKE TO PLAY GAMES WITH?" THEY MAY NOT WANT TO SHARE THIS INFORMATION WITH YOU, SO ENSURE YOU TEACH THEM ABOUT HEALTHY RELATIONSHIPS.



4

5

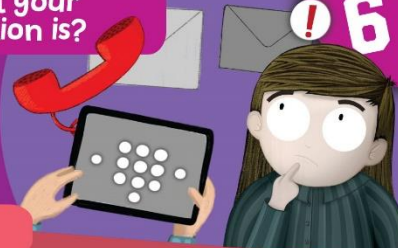


Do you know where to go for help?

ALTHOUGH YOU MAY BE THE ADULT THEY TRUST THE MOST, SOME CHILDREN STRUGGLE TO TALK ABOUT WHAT HAPPENS ONLINE DUE TO CONFUSION OR EMBARRASSMENT. BECAUSE OF THIS THEY MAY STRUGGLE TO APPROACH THE NORMAL PEOPLE WHO WOULD HELP, SUCH AS YOURSELF OR A TEACHER. HAVE A CHAT TO YOUR CHILD ABOUT EXACTLY WHERE THEY CAN GO FOR HELP, AND HOW THEY CAN REPORT ANY ACTIVITY THAT THEY BELIEVE IS INAPPROPRIATE ONLINE.

Do you know what your personal information is?

YOUR CHILD MAY ALREADY KNOW WHAT THEIR PERSONAL INFORMATION IS BUT THEY MIGHT NOT THINK ABOUT HOW IT CAN BE SHARED. HAVE A CONVERSATION ABOUT WHAT PERSONAL INFORMATION IS AND HOW THIS CAN AFFECT THEM IF IT IS SHARED BEYOND THE INTENDED RECIPIENT. IT IS IMPORTANT THAT YOUR CHILD UNDERSTANDS THE DANGERS OF SHARING CONTACT DETAILS OR PHOTOS, AS INFORMATION SUCH AS THIS CAN SPREAD QUICKLY ONLINE.



6

7



Do you know your limits?

CHILDREN MAY NOT UNDERSTAND THE NEGATIVE IMPACTS OF DEVICE OR GAME ADDICTION. TALK TO THEM OPENLY ABOUT HEALTHY HABITS AND ASK WHETHER OR NOT THEM SPENDING TIME ONLINE OR PLAYING A GAME IS AFFECTING THEIR SLEEP, PERFORMANCE AT SCHOOL OR IF THEY ARE GENERALLY LOSING INTEREST IN OTHER ACTIVITIES. YOU MAY LEAD ON TO ENCOURAGING ALTERNATIVE ACTIVITIES AND DISCUSSING THE INTRODUCTION OF TIME LIMITS WHEN AT HOME.



www.nationalonlinesafety.com

Twitter - @natonlinesafety

Facebook - /nationalonlinesafety

Phone - 0800 368 8061

Remember ... Keep checking our School Website Facebook & Facebook Pages ☺
www.shilbottle.northumberland.sch.uk



Shilbottle Primary Newsletter

MULTI -SKILLS FESTIVAL for YEAR ONE and YEAR TWO – 14 February 2019



Our Fab Four from Year One and Year Two who travelled to The Duchess' High School on Thursday for the first ever after school Key Stage One Multi Skills Festival organised by Mrs Burroughs. Everyone enjoyed themselves and had different favourite activity. We were lucky that older siblings also came a long and gave a helping hand ☺ and we recognised several of last year's pupils helping as Year 7 sport leaders which was also really nice!

WELL DONE EVERYONE ☺



Congratulations **Year One** – your class assembly for your grown-ups was BRILLIANT!

Year 5 & 6 are **outside for P.E.** [rugby] on a Thursday afternoon – they were reminded the night before that they would need their outdoor kit and shoes ... most of them did a really good job at remembering to bring the right clothes and footwear this week rather than rely on the spare box [which wasn't there] – Let's see if EVERYONE can remember next Thursday!

Year 3, Year 4, Year 5, Year 6

P.E. next term is **Quicksticks** [a mini version of hockey]. It is recommended that your child wears a mouthguard and shin pads for the lessons.





Fun, Respect & Friendship – Every child matters to us

Shilbottle Primary Newsletter

Dates at a glance [so far...]

16 Feb – 24 Feb ½ TERM HOLIDAY ☺			
Wed 27 Feb	Beach School @ Alnmouth	Reception	All day
Wed 27 Feb	U11 Football v Hipsburn [H]	U11 team	3:30 – 4:30
Tues 5 Mar	School Games Qualifier – Tag Rugby	Year 5 / Year 6	1:00 – 3:00
Wed 6 March	Beach School @ Foxton	Reception	All day
Thurs 7 March	U11 Football v Whittingham [A]	U11 team	3:30 – 4:30
Thurs 7 March	Jarrow Hall Anglo-Saxon Farm	Year 4	All day
Thurs 7 March	World Book Day	Whole School [not Y4]	All day
Tue 12 March	School Games Qualifier – football	Year 5 boys team	1:00 – 3:00
Tue 12 March	Maths SATs revision	Y5 / Y6 parents/children	3:15 – 4:15
Tue 12 March	Stay & Play @ Friendly Frogs	Parents with under 4's	1:00 – 3:00
Wed 13 March	U11 Football v St Paul's [H]	U11 team	3:30 – 4:30
Fri 15 March	Comic Relief - Red Nose Day	Whole School	All day
Mon 18 March	School Games Qualifier – Quicksticks	Y5 / Y6 teams	12:00 – 4:00
Wed 20 March	U11 Football v Ellingham [A]	U11 team	3:30 – 4:30
25 – 27 March	Robin Wood Residential	Y3 / Y4	All day
Wed 27 March	School Games Qualifier – Y5 football	Y5 team	1:00 – 3:00
Wed 27 March	U11 Football v Ellingham	U11 team	3:30 – 4:30
Wed 3 April	Beach School @ Boulmer	Reception	All day
Thurs 4 April	Quicksticks Competition @ DCHS	KS2	3:30 – 5:00
6 Apr – 22 April EASTER HOLIDAY ☺			
Wed 24 April	School Games Qualifier – netball	U11 team	3:30 – 5:00
Mon 29 April	School Games Qualifier – quadkids	U11 team	1:00 – 3:00
Tues 30 April	District Nurse PSHE talk	Year 5	1:00 – 2:00
Wed 1 May	Beach School @ Low Newton	Reception	All day
6 May MAY BANK HOLIDAY ☺			
Thurs 9 May	PARA SCHOOL GAMES DAY	KS2	All day
Fri 10 May	School Games Qualifier – tennis	Year 4 team	12:00 – 2:00
13 May – 16 May	Key Stage 2 SATs Week	Year 6	Mornings
Wed 15 May	Beach School @ Boulmer	Reception	All day
Mon 20 May	School Games – Personal Best	Year 3	10:00 – 12:00
Tues 21 May	Rounders Competition @ Hipsburn	KS2	3:30 – 5:00
25 May – 2 June ½ TERM HOLIDAY ☺			
5 – 7 June	London Residential	Year 6	All day
Mon 17 June	School Games – Personal Best	Year 4	10:00 – 12:00

Remember ... Keep checking our School Website Facebook & Facebook Pages ☺
www.shilbottle.northumberland.sch.uk



Fun, Respect & Friendship – Every child matters to us

Shilbottle Primary Newsletter

What's on in the wider community...

Alnmouth Golf Club	Alnmouth Golf Club - juniors
Alnmouth Juniors FC	Thursday night training
Alnwick Academy of Dance	Alnwick Academy of Dance
Alnwick Bears RLFC	www.alnwickbears.co.uk
Alnwick Highland Dancers	Wednesday 7:00 – 8:00, Lindisfarne Middle School Hall Reception upwards
Alnwick Junior Harriers	Tuesday & Thursday 6 – 7 pm @ Lindisfarne Sports Centre contact Alison Hutchings on: ah.juniorharriers@gmail.com
Alnwick Town Juniors FC	http://www.alnwicktownjuniors.co.uk/
Amble Junior Netball	Thursday evenings [6:30 – 7:30pm] for Y3 upwards at James Calvert Spence College [JCSC] Amble. Y2 are welcome but parents need to stay. £1.50 per week.
Alnwick Mini & Juniors Rugby [Year 1 upwards]	Every Sunday 10:30 – 12 noon ☺ Year 1 – Year 3 = tag rugby; Year 4 upwards = contact rugby.
Beavers, Cubs & Scouts	Wednesday evenings, Felton or Alnwick info@northumberlandscouts.org.uk
FC Amble Juniors	FC Amble Juniors
Felton Juniors FC	Felton juniors
Judo Alnwick	Alnwick Judo https://www.getintomartialarts.com Monday, 4:00 – 4:45 pm
Karate	Monday and Friday evenings @ Willowburn
Longhoughton Rangers FC	Longhoughton Rangers Football Club
Rainbows, Brownies and Guides	Register your interest at https://enquiryym.girlguiding.org.uk/ Monday evenings during term time at Warkworth Primary School.

CAN YOU THINK OF ANY OTHER CLUBS WE COULD ADD?

Remember ... Keep checking our School Website Facebook & Facebook Pages ☺
www.shilbottle.northumberland.sch.uk