



# Shilbottle Primary School Friday Flyer

**12 June 2026**

## Headteachers Update

Another brilliant week in our brilliant school! As we slowly but surely come to the end of our assessment period, I wanted to take the opportunity to say how proud we are of all of our children. Throughout the week, they have continued to demonstrate the positive attitudes, resilience and determination that make our school such a special place.

This week, our Year 1 children completed their Phonics Screening Check. Our Year 4 children have also completed their Multiplication Tables Check. With only six seconds to answer each question, this can be quite a challenging experience. We are incredibly proud of how maturely they approached these important assessments and how confidently they were able to demonstrate the progress they have made. A huge thank you must also go to our staff, whose hard work and commitment throughout the year helped ensure that our children are as prepared and confident as possible.



It has been lovely to see PE lessons beginning to focus on athletics as we build towards Sports Day next week. Weather permitting, Sports Day will take place on Tuesday afternoon and we would love to see as many families there as possible supporting the children. This year's event will take place on the Welfare field beside the Memorial Community Centre. Our fantastic SPPA will also be there with refreshments and a small raffle, so please do come along and support them if you can. As always, every penny raised helps provide additional opportunities for our children.

As we move towards the end of the academic year, transition activities are beginning to take place. We will also be sharing information shortly about our own transition arrangements, including classes and staffing for next year, once final details have been confirmed.

The week ended, as always, with our Celebration Assembly and Hot Chocolate Friday. Congratulations to all of our winners and thank you for continuing to represent our school so brilliantly.

Have a wonderful weekend and hopefully enjoy some of the brighter weather forecast. We look forward to welcoming everyone back on Monday.

**Mr Shaw**



# Shilbottle Primary School Friday Flyer

## Safeguarding

Shilbottle Primary School is committed to keeping all children safe. Our staff regularly participate in safeguarding training and are fully aware of how to keep our pupils safe and what signs to look out for. Our pupils know they can share any concerns and we have robust policies and procedures in place which underpin safeguarding. It is our paramount priority to keep all children healthy and safe. Remember our Designated Safeguarding Leads (DSL) in school are **Mr Phillips, Mrs Blackhall and Mr Shaw**.

## World Cup 2026

The FIFA World Cup 2026 kicked off this week with the opening match between Mexico and South Africa and will conclude with the final on 19th July.

The World Cup can be an exciting time that brings people and communities together through a shared love of sport. However, the experience of major sporting events and football is not the same for everyone, particularly for women and those affected by Domestic Abuse.

We would like to remind all families that support is available for anyone experiencing Domestic Abuse or feeling unsafe at home. If you, or someone you know, needs help, the following organisations can provide confidential advice and support:

- National Domestic Abuse Helpline – 0808 2000 247
- Refuge: [www.refuge.org.uk](http://www.refuge.org.uk)
- Women's Aid: [www.womensaid.org.uk](http://www.womensaid.org.uk)
- In an emergency, always call 999

Please also speak to a trusted member of staff if you require any support or guidance.

We hope everyone enjoys the tournament safely and respectfully.





# Shilbottle Primary School Friday Flyer

## Attendance

As parents and carers we want to share our attendance figures because it is you who can make the big difference. Our children are entitled to a full and balanced education and at Shilbottle we feel we provide one of the best experiences possible.

**Current Whole School attendance is 94.7%. Our Whole School Target is 96%**

Class	Weekly attendance	Annual attendance
Mrs Blackhall	96.9%	94.3%
Mrs Kelly	98.0%	95.2%
Mr Phillips	84.8%	94.5%

Days of school add up to lost learning						
Days in school	190	186	180	175	171	170
Percentage attendance	100%	98%	95%	92%	90%	<90%
	Excellent	Excellent	Good	Caution	Cause for concern	Serious concern

Absence Procedures if your child is ill, please keep them at home until they are well enough to return to school. Please notify us by phone call or email before 9.15am if your child is to be absent, and continue to inform us on a daily basis if they continue to be ill.

We have a continual focus on attendance and punctuality and this is of the utmost importance in your child's education. Please remember that our school gate closes at 8.40am as this is when our lessons begin. Anyone arriving after this time is classed as late and will miss valuable learning opportunities, such as phonics, which take place immediately after registration.



# Shilbottle Primary School Friday Flyer

## Classroom updates - Bluebell Class

Bluebell Class have had lots of exciting events and changes happening behind the scenes this week.

Our Year 1 children completed their Phonics Screening Checks. They have been working hard to practise with Miss Hedley in school, and we were incredibly proud of the positive attitudes, resilience and effort they showed throughout the process. As Mrs Blackhall was administering the checks, the KS1 children spent some of their morning sessions learning together with Miss Hedley in Reception. They took part in Drawing Club, where they enjoyed watching the classic 1990s animation *Pingu*. This proved hugely popular, leading to plenty of giggles as well as some fantastic drawing and writing outcomes. Our older children embraced what would usually be a Reception session with enthusiasm, respect and kindness, supporting their younger peers brilliantly.



In Maths, our Reception children have begun exploring sharing and grouping. They started by looking at different representations of groups and discussing whether they were shared fairly (equally). They then put their learning into practice by sharing a bowl of strawberries between themselves, carefully checking that everyone received the same amount.

Our Key Stage 1 children have been comparing equivalent fractions, learning that two quarters are equivalent to one half, and have now moved on to recognising and finding three quarters.

In English, our Key Stage 1 children have been introduced to their new text, *The Lighthouse Keeper's Lunch*. Using the story as a stimulus, they will begin planning and writing their own fact files about Mr Grinling, the lighthouse keeper.

In Science, all three year groups have now had the opportunity to plant and water their own seeds. Over the coming weeks, we will nurture them carefully while observing, discussing and recording the changes that take place as they grow.



As Sports Day approaches, we have taken advantage of every dry-weather opportunity to practise our races. The children have been fantastic at having a go, encouraging their peers and demonstrating resilience and good sportsmanship when things have not gone quite as they had hoped. We are very proud of the positive attitudes they continue to show.

Have a lovely weekend everyone.

**Mrs Blackhall**



# Shilbottle Primary School Friday Flyer

## Classroom updates - Poppy Class

Another week has passed by as we move ever closer to the end of the school year. The Year 4 children completed their Multiplication Tables Check this week, and I am extremely proud of how hard they have worked in preparation. They have shown great commitment and perseverance, and they should all be very proud of themselves. We have also been practising hard for Sports Day next week, and we are all keeping our fingers crossed that the weather stays fine!

In Maths, we have continued our work on decimals, focusing on partitioning numbers and understanding the importance of zero as a place value holder. This has proved challenging at times, but the children have worked hard to develop their understanding and confidence. In English, we completed our campaign speeches on the issue of noisy corridors in school. The children used a range of persuasive techniques, including emotive language, rhetorical questions and powerful arguments to strengthen their speeches. We then focused on our speaking and listening skills, performing our speeches to our classmates and remembering to address our audience, project our voices and speak clearly and confidently. We also started looking at our new story "The Day I fell into a fairytale".

In Geography, we continued our work on Southern Europe and explored the different climate zones around the world. We compared the climate of England with that of Southern Europe, learning that while England generally experiences warm summers and cold winters, Southern Europe is known for its hot, dry summers and milder winters.

We also began our new Science topic on plants. This week, we learned about the functions of the different parts of a plant and discussed how each part helps the plant to survive. We then set up an experiment using food colouring to investigate how water is transported through a plant, and we are looking forward to observing the results over the coming days.

In PSHE, we explored the power of advertising and how companies use persuasive techniques, catchy slogans and memorable jingles to encourage people to buy their products. The children enjoyed analysing different adverts and discussing how they influence our choices.

We hope for plenty of sunshine next week as we look forward to Sports Day and another busy week of learning. Have a wonderful weekend! **Mrs Kelly**

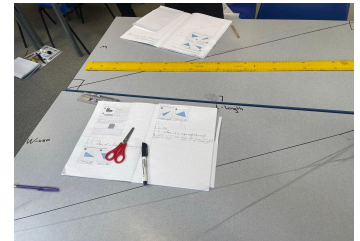




# Shilbottle Primary School Friday Flyer

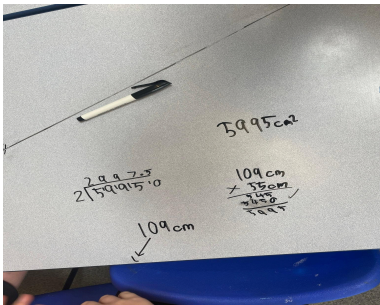
## Classroom updates - Clover Class

Hold the front page! Clover Class is officially stepping into the role of journalists for The Scallop Shell community newsletter. We are incredibly excited for parents and the wider community to see our very first journalistic report in the public domain! It feels entirely fitting to launch our column during a blockbuster summer of global sport. Right now, media headlines are dominated by peak human achievement at the Men's Football World Cup, Queen's, Wimbledon, the ICC Women's T20 World Cup, and the US Open. However, our young reporters don't need to look to international stadiums for a story of championship success—they are writing about a massive victory right here at home.



In our upcoming feature, parents will be able to read all about the three years of hard work that transformed our school grounds into a thriving

wildlife haven. Through our partnership with the RHS and the Natural History Museum's National Nature Park, our students have evolved from pupils into recognized community scientists. This dedication recently earned us a feature on ITV News and the Runner-Up trophy at the Love Northumberland Awards! We cannot wait for you to read our article and share in our ecological triumphs.



area of a right-angled triangle. It was a fantastic, hands-on way to master a tricky geometry concept.

We also took full advantage of the beautiful sunshine this week to begin practicing for Sports Day (Tuesday 16th June). The forecast is looking great at the minute, and judging by the practice sessions, there are going to be some incredibly close contests this year!



We officially launched our new art project this week. We have been sketching initial drawings inspired by the famous Pitman Painters artwork that we saw during our recent visit to Woodhorn Colliery. Our goal is to create our own modern take on life in Shilbottle—honoring its history as a former pit village while capturing the many changes it has undergone in recent years as part of our school's Centenary celebrations.

Have a wonderful weekend,

**Mr Phillips**



# Shilbottle Primary School Friday Flyer

## Dates for your Diary

*Events could be subject to change and will be communicated if required*

Date	Time	
Wednesday 22nd April		Reception/Year1 & Year 2 Swimming (every Wednesday)
Tuesday 16th June	1.00 - 3.00	Sports Day (weather permitting)
Monday 29th June	9.20 - 12.00	Y6 Multi Sports Festival
Friday 17th July	1pm	School closes for the Summer holidays



Shilbottle Primary School  
**Friday Flyer**



**Happy Birthday to all those celebrating  
this week**

**Kaitlin - Poppy Class  
Emily - Poppy Class**



# Shilbottle Primary School Friday Flyer

## **School Safety Notice: Please Slow Down**

The traffic warden has raised serious concerns regarding the speed at which parents are driving down the school road. Unfortunately we still have parents travelling too fast that are approaching the school on Grange Road! We urge parents to please take note of this otherwise you may find a speeding ticket through your door!

Please remember:

- **Check Your Speed:** There are **20 mph** signs posted throughout the village.
- **Stay Vigilant:** Children can be unpredictable; driving at or below the limit gives you the vital reaction time needed to stop safely.
- **Be Courteous:** Let's keep our community safe and set a good example for the kids.

**Bottom line:** Please reduce your speed. A few saved seconds are not worth a child's safety. Thank you for your cooperation!